

Spring 2022

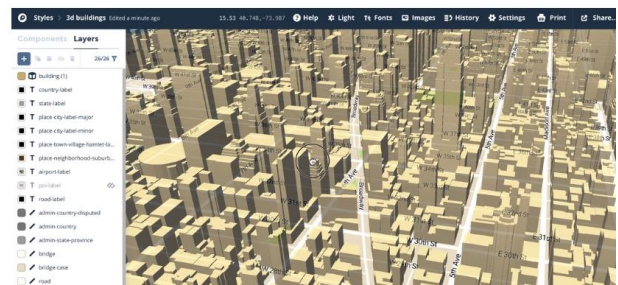
Web Mapping

GEG 237 (3 credit hours) Part of the new micro-credential series (236, 237, 238)



This course is an introduction to Web-based GIS. Students will learn about the usefulness and application of Web GIS tools such as ArcGIS Online Story Maps, Esri Dashboard, Esri Insights, Volunteered Geographic Information (Open Street Map), and Map services (Mapbox or GISCloud). Students will become adept at storing and accessing spatial data in the cloud, practice developing Story Maps to communicate spatial data, and learn how web mapping is key to mobile GIS applications such as field data collection (Esri Field Maps). Students will be guided through a series of lectures and hands-on computer-based lab exercises. An end of a semester project will allow students to work on a project of their own design. Course material used are based upon the United States Department of Labor's Geospatial Technology Competency Model (GCTM) for entry level geospatial occupations including Geospatial or GIS Technicians or Technologists.

Prerequisites: Digital Earth (GEG 130) or permission of the instructor.

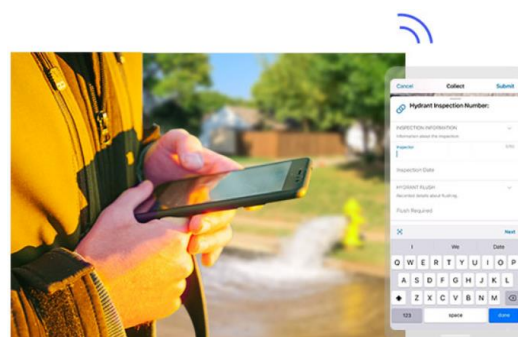
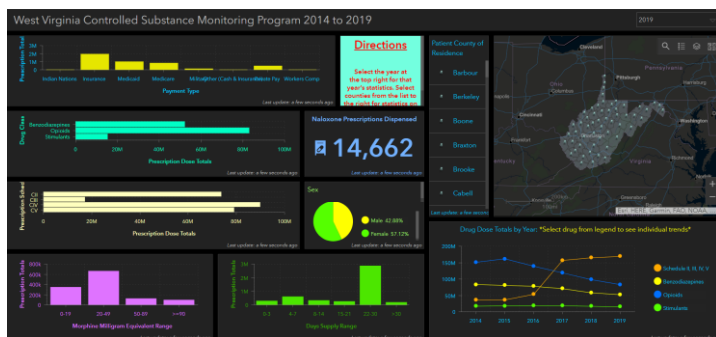


Students in this course:

- Learn important geospatial web mapping skills that are in high demand!
- Apply web GIS tools such as ArcGIS Story Maps, Open Street Maps, and MapBox.
- Develop field data collection apps.
- Apply cartographic principles in online map design.
- Practice using web maps as a tool for topics such as emergency management.

Topics covered:

- Web Mapping vs. Desktop
- Spatial Data in the cloud
- Web GIS platforms
- Online map publication on a web service
- Story Map Design
- Apply critical-thinking skills to solve problems by using Web GIS tools in the development, management, completion, and evaluation of a comprehensive geospatial project.



Day/Time:
ONLINE

Faculty:
Jonathon Little

Registration:
<http://www.monroecc.edu/depts/recreg/howtoreg.htm>

For more information, email: jlittle@monroecc.edu